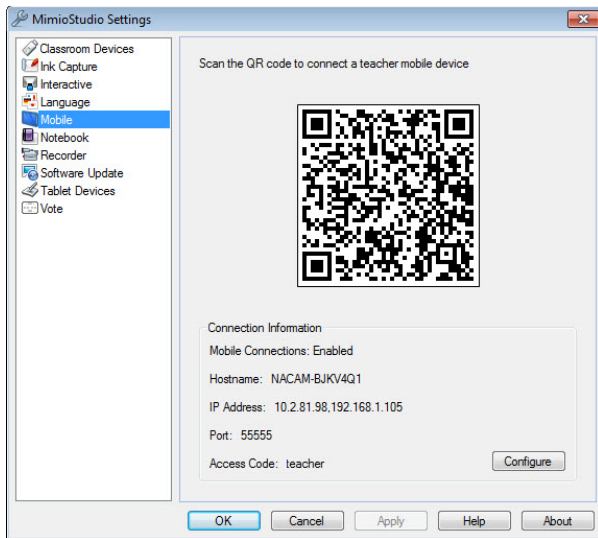


Step 1

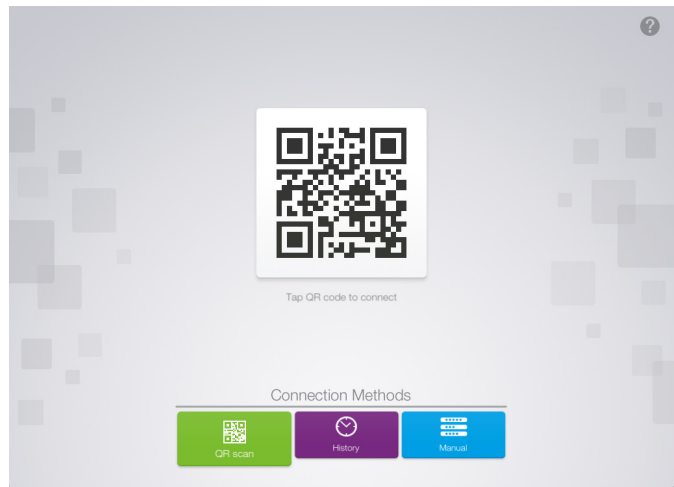
In the MimioStudio™ classroom software on the computer, click on “Tools” > “Settings”> “Mobile.”

Mac: Notebook > “Preferences” > “Mobile”



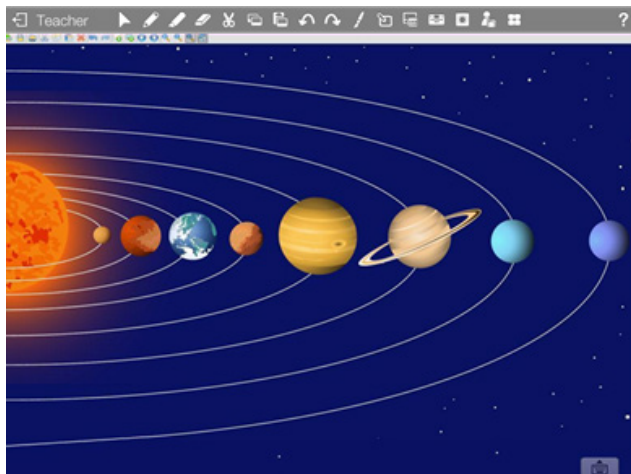
Step 2

In the MimioMobile™ app on the teacher’s device,* the teacher should tap on the large QR code image and then point and align his or her mobile device camera at the QR code projected on the whiteboard or computer monitor.



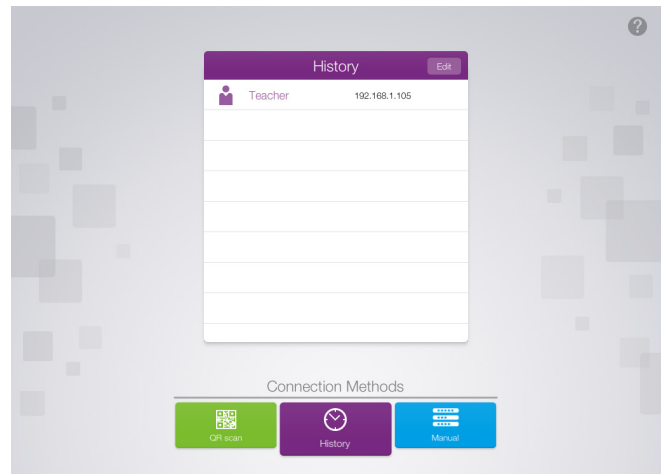
Step 3

The MimioMobile app now has full control of your computer.



If you’ve previously connected

Tap on the “History” tab and choose recent Teacher connection.



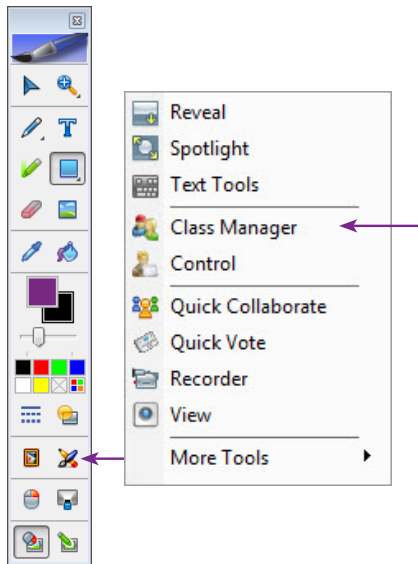
Note: Use of MimioPad™ tablets and/or devices using the MimioMobile app requires latest version of MimioStudio software. All student devices must be connected to the same Wi-Fi network as the teacher’s computer.

* Supported Devices: iPad 2 and higher, iPad mini, iPod Touch (4th generation and higher), iPhone (4 and higher), and Android 3.0 (Honeycomb) or higher phone and tablets.

*Supported Web Browsers: Google Chrome, Internet Explorer 11 and higher, Edge

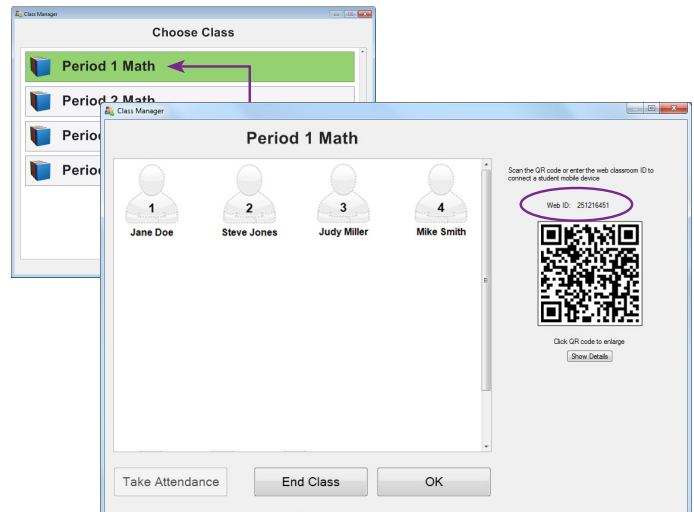
Step 4

In the MimioStudio software on the teacher's computer, click on "Applications" > "Class Manager."



Step 5

In the "Choose Class" window, double-click on the class you wish to select, or select the class and click on "Start Class." Students who are accessing the MimioMobile app via the Web will need to enter the Web ID, which appears above the QR code, at mobile.mimio.com.



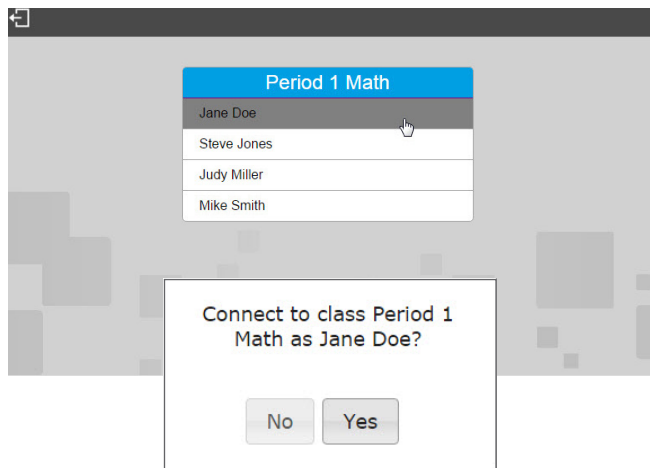
Step 6

Using a supported* Web browser, students visit mobile.mimio.com and enter the Web ID in the Class Manager.



Step 7

Students select their name from the class list and click "Yes" to connect.



Note: Use of MimioPad tablets and/or devices using the MimioMobile app requires latest version of MimioStudio software. All student devices must be connected to the same Wi-Fi network as the teacher's computer.

* Supported Devices: iPad 2 and higher, iPad mini, iPod Touch (4th generation and higher), iPhone (4 and higher), and Android 3.0 (Honeycomb) or higher phone and tablets.

*Supported Web Browsers: Google Chrome, Internet Explorer 11 and higher, Edge