

**Power Button / Status Light:** Push down and hold to sync the MimioPad™ wireless pen tablet to the MimioHub™ wireless receiver. Repeat this process to add multiple MimioPad tablets to the same MimioHub receiver.

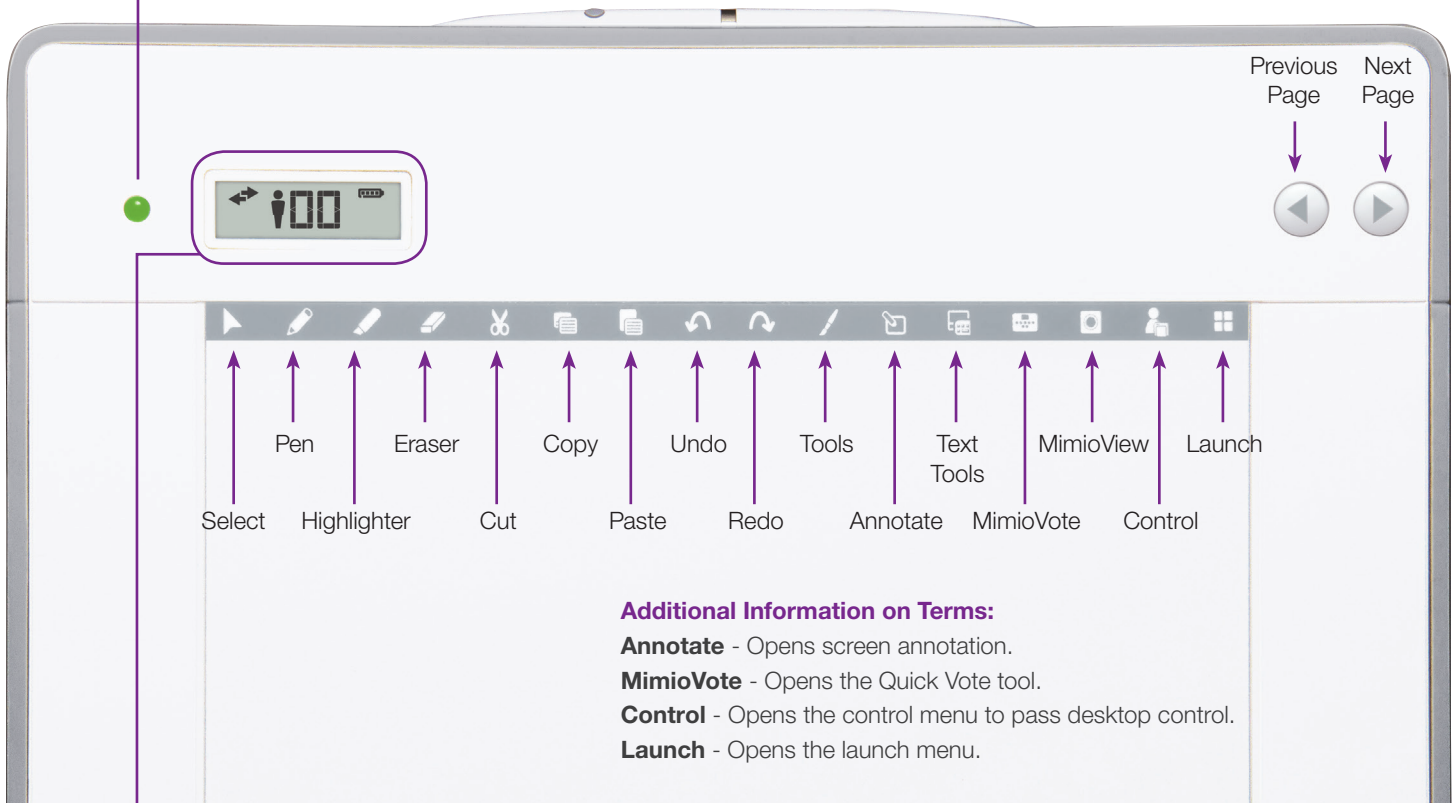
**Status Light:**

**Off** - MimioPad tablet is not receiving power or is off.

**Solid Green** - MimioPad tablet is connected and receiving power; MimioStudio™ software is running.

**Flashing Green** - MimioPad tablet is connected and receiving power; MimioStudio software is not running.

**Solid Amber** - MimioPad tablet is connected and receiving power; MimioPad tablet is searching for connection to the MimioHub receiver.



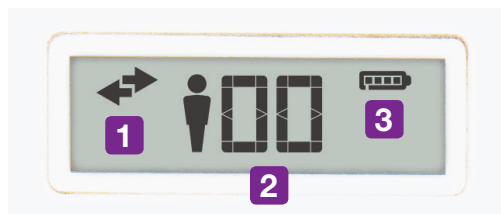
**Additional Information on Terms:**

**Annotate** - Opens screen annotation.

**MimioVote** - Opens the Quick Vote tool.

**Control** - Opens the control menu to pass desktop control.

**Launch** - Opens the launch menu.



**LED Display:**

**1 Left arrow** – MimioPad tablet is connected to the computer and ready to transfer data.

**Right arrow** – Stylus is in communication range of the MimioPad tablet.

**2 Unit Number** - In Student mode, the MimioPad tablets do not display the person icon.

**3 Battery Indicator**

## Hardware Components



Battery-less stylus attaches magnetically at top of the MimioPad tablet.

Stylus button creates right-click.



**Micro-USB Connection -**  
Connect to computer to charge.

## Control

Select any student using a mobile device\* equipped with the MimioMobile™ app or a MimioPad tablet to give control to that student.

Take back control by clicking Control and choosing Teacher device.

Give control to another student by clicking Control and choosing that student's device.



Control



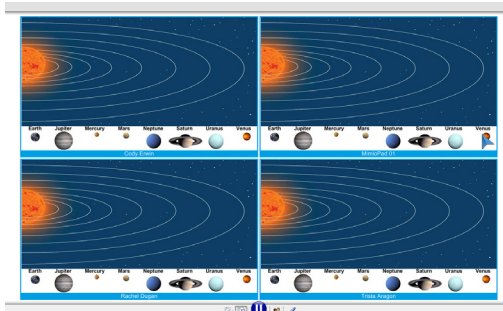
## Collaborate

Up to fifty mobile devices, MimioPad tablets, or a combination of both can be connected at once. Teachers can have a single student or the entire class work on the same activity, pause student sessions, share them in any combination on the front-of-the-class display, or hide all the sessions. For on-the-fly collaboration opportunities, you can use the Quick Collaborate feature from the Launch menu to work on blank Notebook pages.

**The Collaborate feature can be accessed within the MimioStudio software on the top toolbar.**



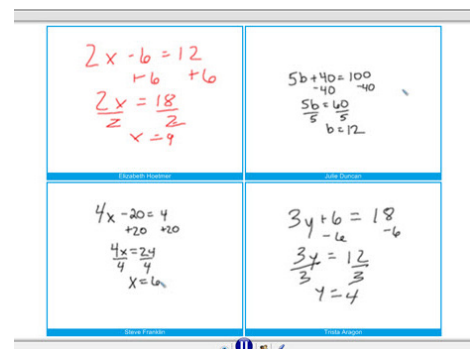
Collaborate



Launch



Quick Collaborate



**Note:** Use of MimioPad tablets and/or devices with the MimioMobile app requires MimioStudio 11 software. All mobile devices must be connected to the same Wi-Fi network as the teacher's computer.

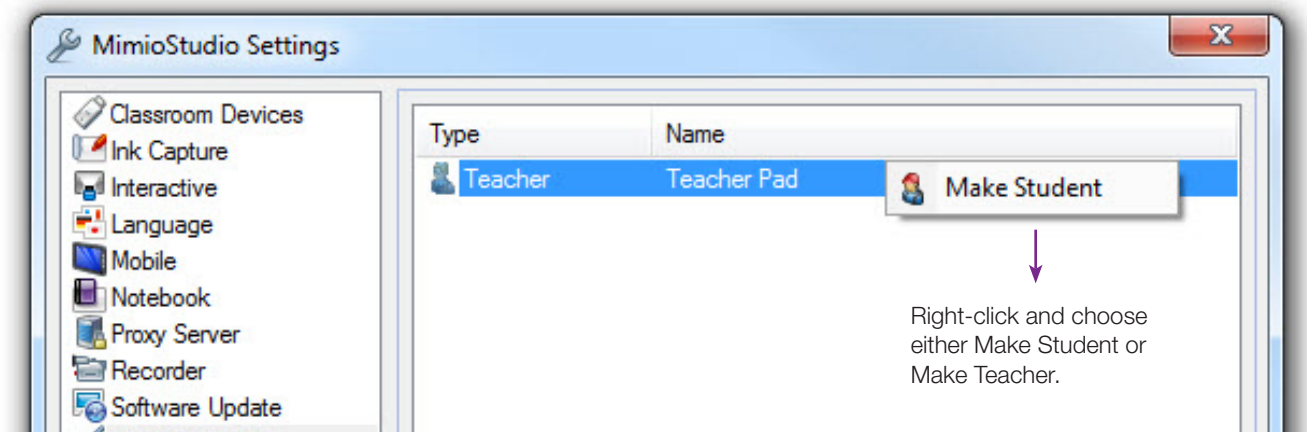
\* Supported Devices: iPad 2 and higher, iPad mini, iPod Touch (4th generation and higher), iPhone (4 and higher), and Android 3.0 (Honeycomb) or higher phone and tablets.

## Teacher vs. Student Mode

You can easily configure the MimioPad tablet for Teacher or Student use.

Connect multiple MimioPad tablets as student tablets allowing for student control and class collaboration.

**Tools > Settings > Tablet Devices (Mac: Notebook > Preferences > Tablet Devices)**



**Note:** When a mobile device enabled with the MimioMobile app is used in teacher mode along with a MimioPad tablet in teacher mode, the MimioPad tablet will automatically change to student mode.

