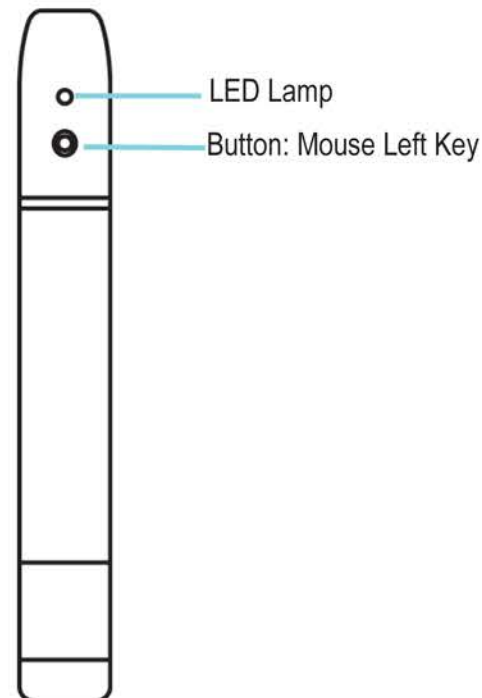


INTERACTIVE FUNCTION MANUAL

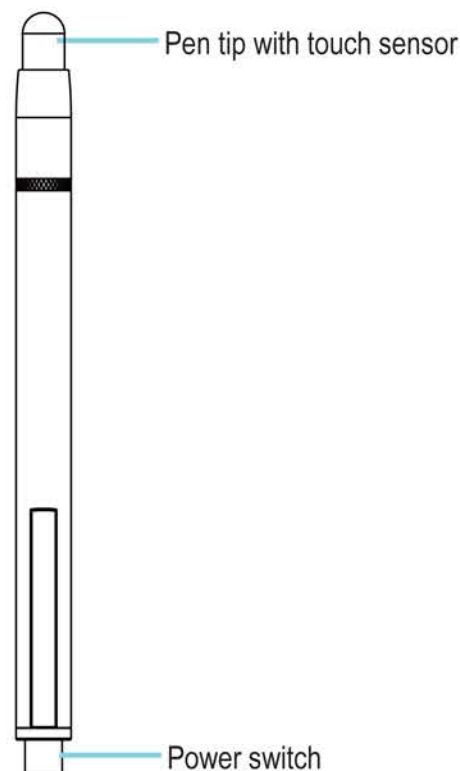
P/N:13350436

Accessories Introduction

1.Function Key on the "Pointer Body"



2.Function Key on the "Light Pen"

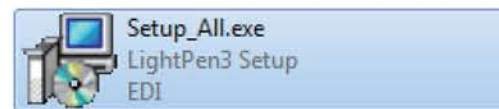


Interactive function is provided by "LightPen3" software

- To ensure the interactive function works properly, please check your computer to see if it meets the following conditions:
OS Required: Microsoft Windows XP(SP2) / Vista / Windows 7 (32bit/64bit)
Processor Type: Pentium 4 2.0GHz or above
RAM: 512 MB or above
Min. Free disk space: 80 MB

LightPen Software Installation

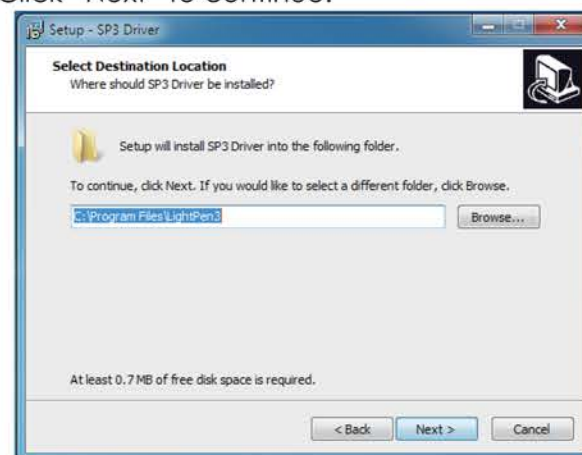
- Step 1. Insert the "Owners Manual" CD-ROM into the CD drive.
Step 2. Open the "LightPen3 Software for Windows" folder in the CD-ROM.
Step 3. Double click "Setup_All.exe". The "Setup Wizard" will appear as below.



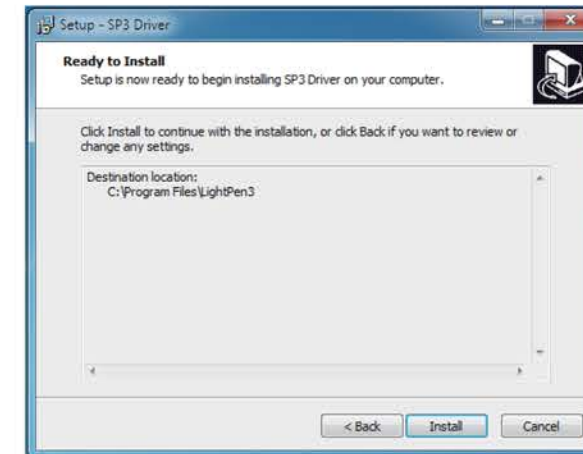
3_1: Click "Next" to install.



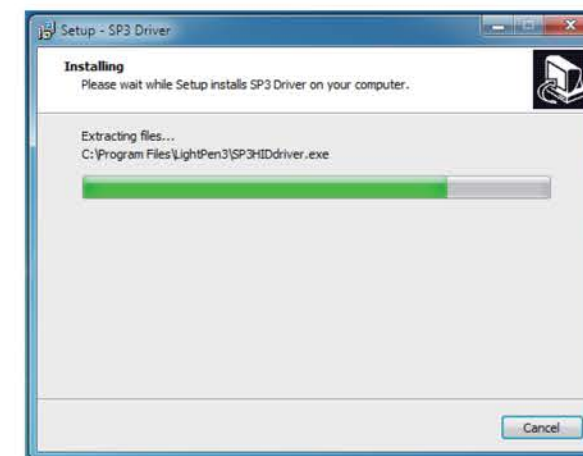
3_2: You can choose your install directory, depending on your requirements or use the default directory. Click "Next" to continue.



3_3: Confirm the information listed and select "Install".



3_4: Please wait while program installs.



3_5: When installation is finished, click "Finish" to exit setup.

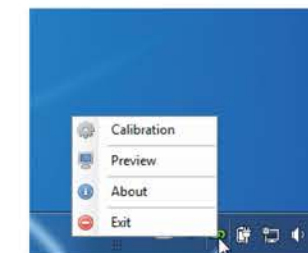


Initial Setup for Interactive Function

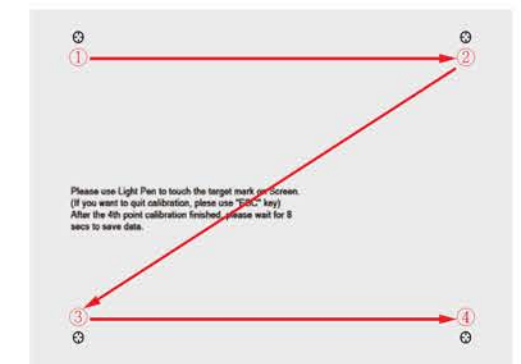
1. Connect supplied USB cable between projector and your PC, which shows the icon below.



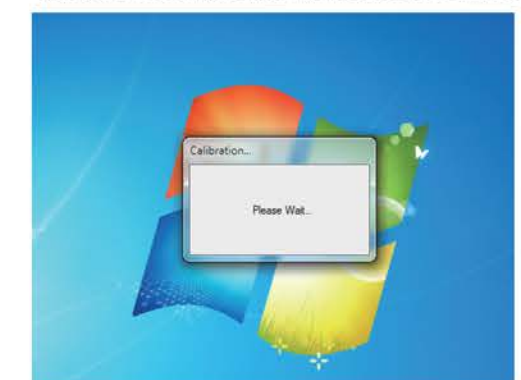
2. Click the  icon in the task bar to show the menu



3. Select "Calibration" to enter the calibration process. Use your pen or pointer to touch the circle shown on the screen, another circle then appears, repeat this process until the 4th circle is finished.

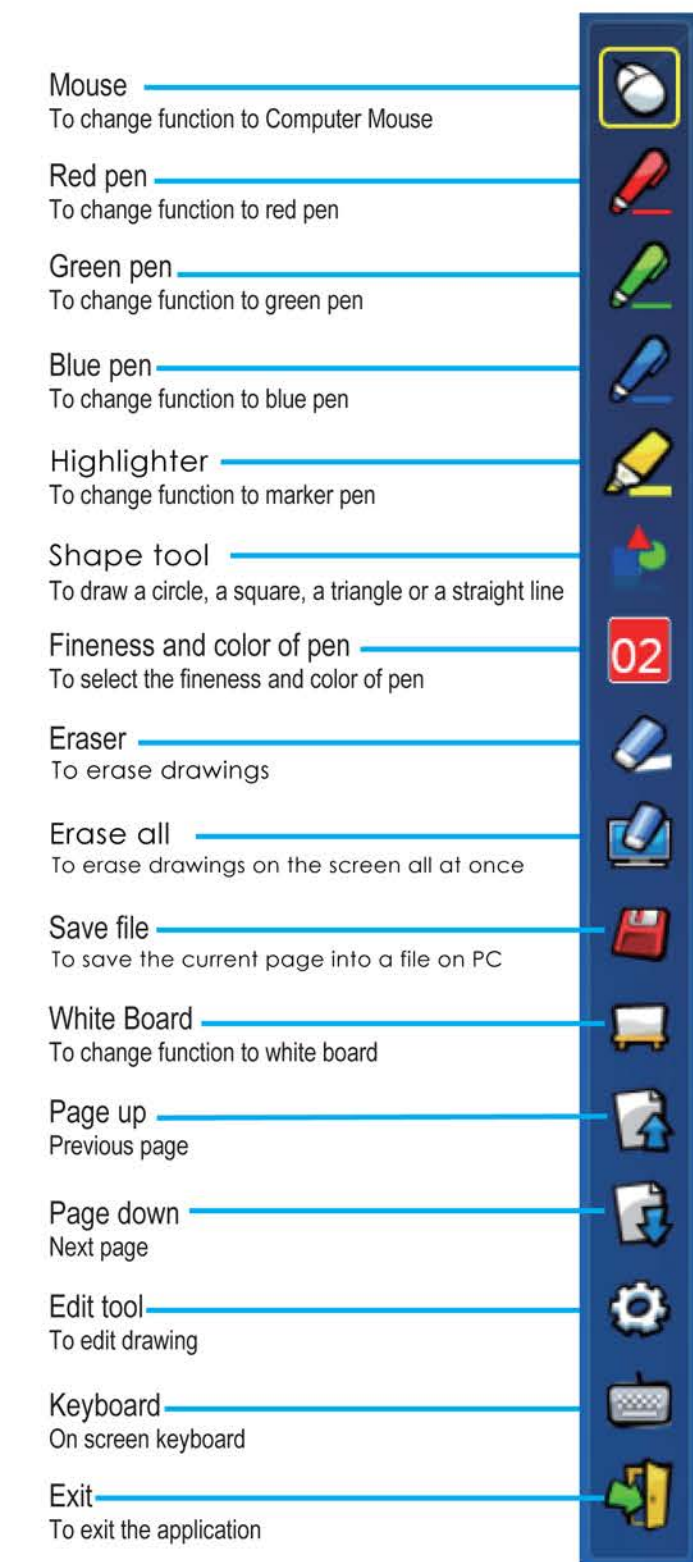


4. After calibrating the 4 points on the screen, the PC will save the data as shown below. This process will take approx. 8 seconds.



5. After you have finished the calibration, you can use either the pen or pointer as a mouse on the projection surface.

Function of each icon in the Tool bar



Other function in Tool bar

a : Shape Tool

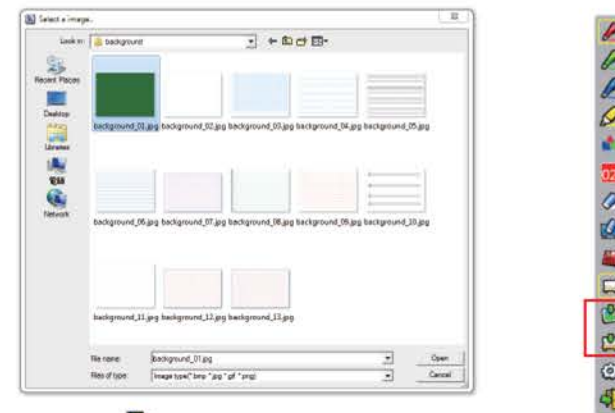


Select the shape tool icon. The function menu will be shown on the screen above.

b : Whiteboard Mode

Select icon, screen will change to a white colored background.

◎ Select icon, you will see the below interface.
You can select any picture you want to be used in the background.



◎ Select icon, then background will turn to white board mode. If you want to exit white board mode, just click on the again.

c : Edit Tool

Select icon, edit tool bar is shown as below.
Select the function you want to use.

Select drawing line as an object.
An object can enlarge, decrease, or move

Rotate the drawing object

To print a screen shot

Undo the last operation

Redo the last operation

How to use

I : Switch to Mouse or Pen mode

Mouse mode or Pen mode can be changed by clicking the tip of the Pointer or the Pen on the top or bottom edge slightly outside of the projected image.



When in mouse mode the icon is shown in the task bar. When in Red Pen mode, icon is shown in the task bar.

II : Change Toolbar Location

There is a quick way to change the position of the tool bar or hide/show it. Place the tip of "Pointer" or "Light Pen" on the left or right edge slightly outside the projected image, then press the button of the pointer or the tip of the pen to the screen.



Troubleshooting

1. Q: Why does it show "No LightPen found"?

A: Reasons for this might be:

(1) The USB cable may not be connected to the PC properly.
(1-1) If you see the following images, it means you should connect the USB cable with the PC and Projector, then execute the driver again.



(1-2) If the following image (A) appears, it indicates that the USB cable is not connected or the USB port is malfunctioning.



(A)



(B)

(2)The USB cable is not compatible.Please use the one included with your projector.

(3)USB port on computer malfunctions. Please check if the USB port is functioning or not. If not, please consult with IT engineer.

2. Q:Why can I not execute the calibration on the circle target?

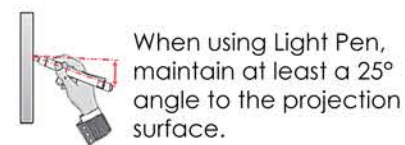
A: (1) Please check if "Pointer" or "Light Pen" works:

(1-1) Please check if "Pointer" or "Pen" battery is low or battery cap is loose.

(1-2) When using "Pointer" or "LightPen", be sure to locate the tip of the "Pointer" or "LightPen" in the site of the CMOS sensor in front of the projector. If the sensor cannot see it, the Interactive system does not work.



Avoid writing in the shadow.



(2)The ambient light may be too strong. Take the light out of the site of the CMOS sensor.

Strong ambient light is usually caused by the following:

(2-1) Sunlight through the windows near the screen.

(2-2) Light source working close to the sensor or the screen.

Please quit the SP3driver and execute again, if you see the window shown in Question5. Please take the light out until you can't see any light in Window.

3. Q: Why is the cursor is not at the position that "Pointer" or "Light Pen" pointed to?

A: Possible reasons for this are:

(1) The system is not calibrated well. Try to point to the "center" of circle target when you run calibration.(See Page 4~5)

(2) The position of the projector, screen or projection size has been changed.

(3) The image resolution has been changed.

Running the calibration procedure again will solve the problem.

4. Q: Why is the cursor jumping?

A: This may be caused by strong ambient light interference. Try to avoid strong ambient light interference, especially strong sun light directly projected on the screen. (Please refer to the Question 2-2.)

5. Q: Why does the window screen appear "Strong lighting in the environment may cause light pen to stop functioning normally." ?

A: If this window is shown automatically after you start LightPen software, it is because the ambient light is too strong. The light is shown white in the window. Please take the light out of the sensor's site by moving the screen or turning off the light or using curtains etc..

